



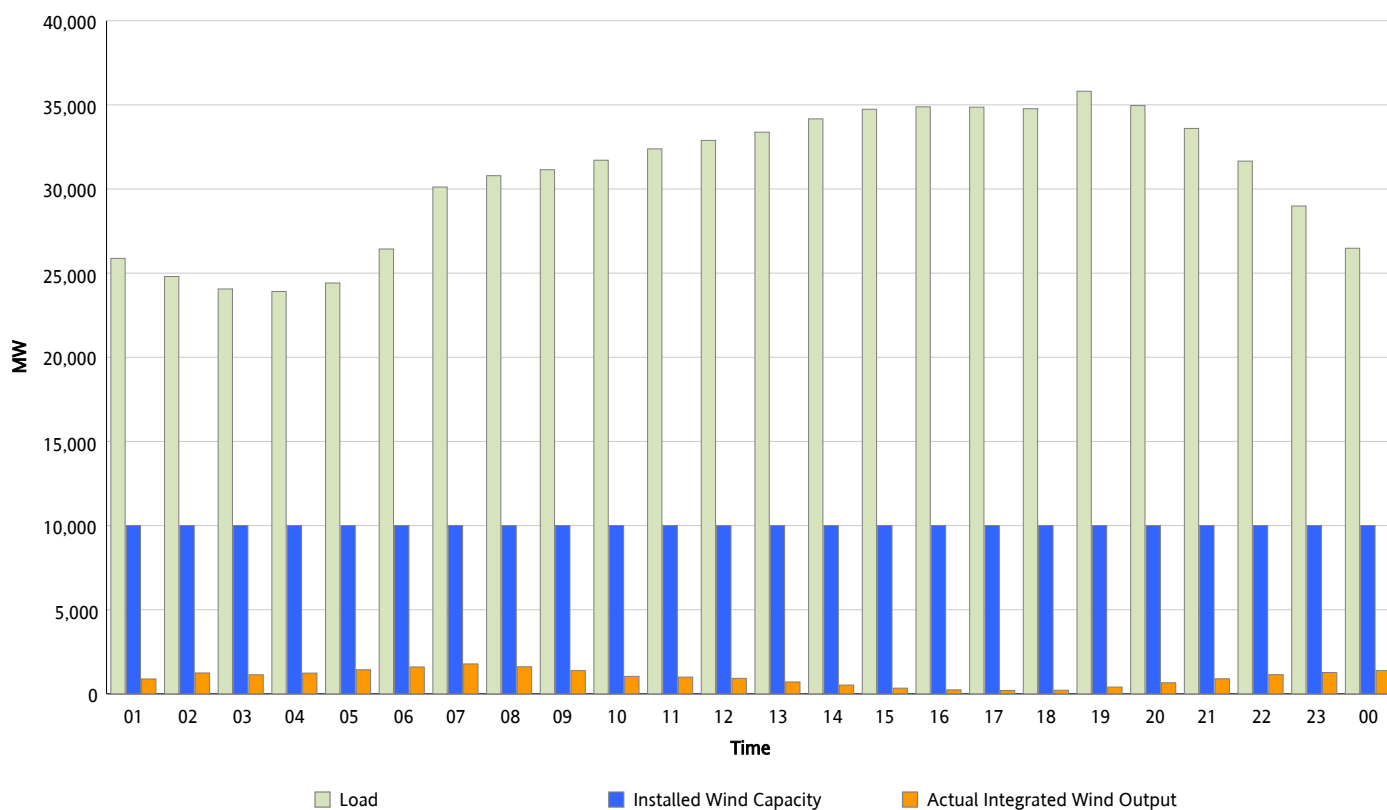
ERCOT Grid Operations

Wind Integration Report : 11/06/2012

Peak Load	35,807 MW
Load Peak Hour (HE)	19
Wind Over Peak	405 MW
Wind Record 06/19/12	8,368 MW
Max Wind Value*	1,866 MW
Wind Peak Time	06:41
Wind Integration %	6.06 %

Hourly Average Actual Load vs. Actual Wind Output

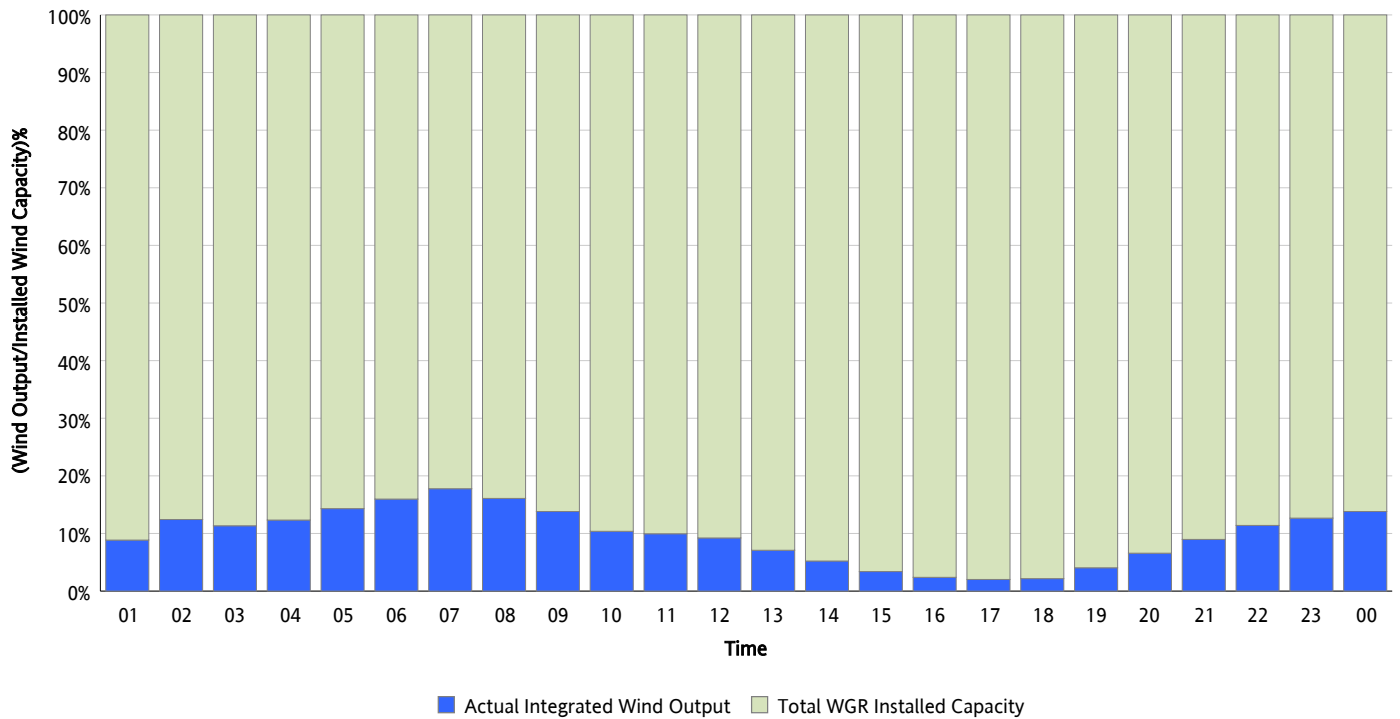
11/06/2012



* Wind Record and Wind Max represent instantaneous values and the rest of the values are integrated over the hour

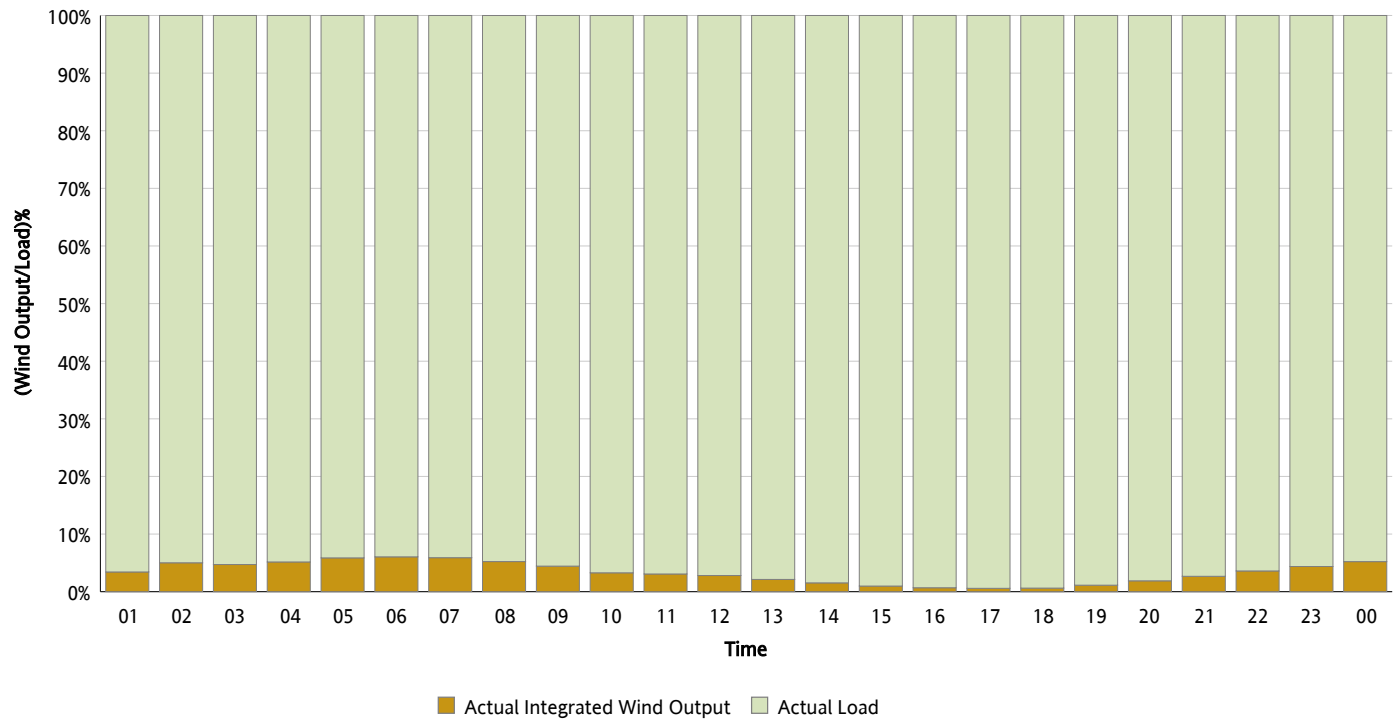
Actual Wind Output as a Percentage of the Total Installed Wind Capacity

11/06/2012



Actual Wind Output as a Percentage of the ERCOT Load

11/06/2012



ERCOT Load vs. Actual Wind Output

10/30/2012 - 11/06/2012

